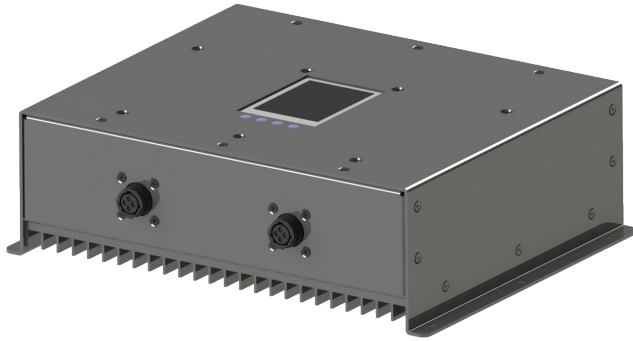


## Versatile and Programmable 2-bank Lead-Based Charging System



### Description

The CTMB2 is a 2 bank versatile and sophisticated charging system for lead based batteries. With a wide operating temperature range (-20C to 50C) and environmentally rugged design, it is especially suited for high end industrial applications. The CTMB2 precisely controls the charging algorithm to insure a complete recharge every time.

Each bank is independently programmable, electrically isolated with no common negative or positive, and operation is completely automatic.

The CTMB2 series is intended for use with several types of lead based battery chemistries such as SLA, AGM, and maintenance free. This multibank charging system has 6 factory standard battery algorithms that can be

- **California Energy Requirement compliant**
- **Fully isolated and programmable banks**
- **Sealed Unit with optional fan cooling**
- **Customized charge algorithms**
- **Optional Temperature compensation**
- **Transient protected input/output**
- **Over temp protection with auto reset**
- **Overcurrent / overvoltage protected**
- **Digital and Ethernet Communications**
- **Reverse polarity protected**
- **AC and DC input options**
- **Remote GUI monitoring**
- **Diagnostic Routine**
- **Four Year Warranty**

customized upon request. A programmable equalization routine provides for desulfation to extend battery life. A user friendly and very informative LCD display is also the programming interface. The display also has a digital volt meter, amp meter, charging status and timing indicators.

The enclosure is completely sealed from dust, other environmental contaminants and is splash proof. The CTMB2 can be connected indefinitely making it ideal for remote and standby applications.

An optional fan can be added for operation in extremely high ambient temperatures, This multibank product can be ordered with input and output power connectors per customer specification.

### AC input model specifications

PARAMETER	DESCRIPTION / CONDITIONS
AC input voltage range	3 input ranges covering 85 VAC - 240 VAC
Input AC amps (max)	Model Dependant
AC input configuration	AC input: line, neutral , chassis ground
Connector	IEC 320

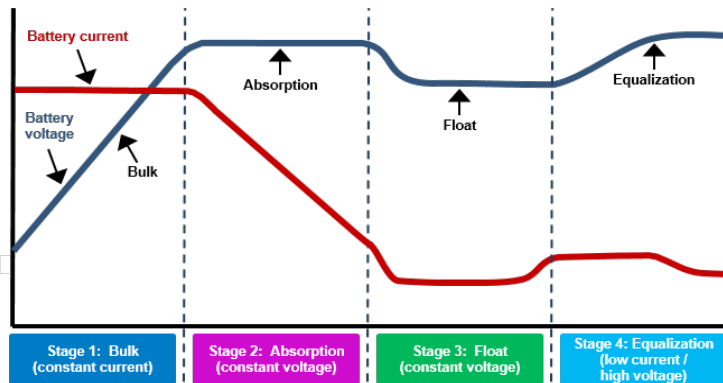
### DC input model specifications

PARAMETER	DESCRIPTION / CONDITIONS
DC input voltage range	4 input ranges covering 18 VDC to 140 VDC
Input DC amps (max)	Model Dependant
DC input configuration	DC input: DC Power, DC Return, Chassis ground
Connector	PP-75 Anderson

# 2-Bank Charger

## Charging specifications

### Four Stage Lead-based battery charging curve



**Charging algorithm:** Supplies constant current  $I_{max}$  to battery until absorption voltage is reached ( $V_{FSTERM}$ ). Transition to absorption mode follows and regulates battery voltage at  $V_{FSTERM}$  until current decreases to  $I_{ABTERM}$ . Float mode follows and regulates battery voltage at  $V_{FLOAT}$ . At the user's discretion, an equalization mode can be initiated. The equalization voltage  $V_{EQ}$  is approximately 2.5V/cell and battery current is limited. For more information, please refer to [www.chargetek.com/images/pdfs/equal.pdf](http://www.chargetek.com/images/pdfs/equal.pdf)

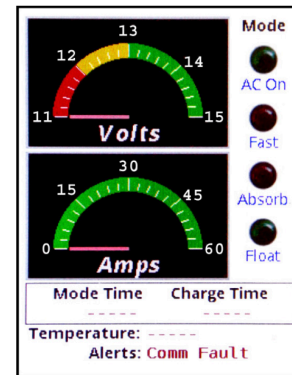
## Standard LCD Displays

CHARGE TEK Model CTMB10				
Bank	Volt	Cur	Charge State	Temp
1	---	---	No Response	o
2	---	---	No Response	o
3	---	---	No Response	o
4	---	---	No Response	o
5	---	---	No Response	o
6	---	---	No Response	o
7	---	---	No Response	o
8	---	---	No Response	o
9	---	---	No Response	o
10	---	---	No Response	o

Select Down    Select Up    Config Bank 1

Bank 1 Configuration-No Battery	
Volts	Amps
Battery Type:	AGM 1
Equalization:	None
Max Absorb Time:	10.0 Hr
Max Equalize Time:	8 Hr
Diagnostic Mode:	Off
Return to Main	

Select Up    Select Down    Modify Next    Value Prev



## 2 Bank Lead-Based Common Specifications

CHARGING PARAMETERS	DESCRIPTION
Absorption transition timeout	10 hours following 85% of $V_{FSTERM}$ (factory settable upon request)
Max charging time	Terminate if $> I_{max}/3 > 15$ hours (factory settable upon request)
Overvoltage protection	Maximum Charging Voltage + 1.0V
Output noise and ripple (PARD)	<150mV, 100MHz BW
Regulation	$\pm 0.5\%$
Efficiency	Measured at max power, varies from 83% to 92% depending on model

# 2-Bank Charger

## 2 Bank Lead-Based Charging Specifications

### 12V Battery Bank

PARAMETER	DESCRIPTION / CONDITIONS	VALUE	UNITS
$V_{FSTERM}$	Fast charge transition voltage	14.6 ±0.1	VDC
$V_{FLOAT}$	Float voltage, $I_{OUT} < I_{FS}$ , 25°C	13.6 ±0.1	VDC
$I_{max}$	Maximum charging current	xx.x ±0.1 (40 Amp model) xx.x ±0.1 (20 Amp model) xx.x ±0.1 (10 Amp model)	Amps
$I_{ABTERM}$	Absorption transition current	2.5 ±0.1	Amps
$V_{EQ}$	Equalization voltage @ < 1A	15.5±0.1	volts
$I_{SBY}$	Max standby current, AC off	1.0	ma

### 24V Battery Bank

PARAMETER	DESCRIPTION / CONDITIONS	VALUE	UNITS
$V_{FSTERM}$	Fast charge transition voltage	29.2 ±0.1	VDC
$V_{FLOAT}$	Float voltage, $I_{OUT} < I_{FS}$ , 25°C	27.2 ±0.1	VDC
$I_{max}$	Maximum charging current	xx.x ±0.1 (20 Amp model) xx.x ±0.1 (10 Amp model) xx.x ±0.1 (5 Amp model)	Amps
$I_{ABTERM}$	Absorption transition current	2.0 ±0.1	Amps
$V_{EQ}$	Equalization voltage, <1A	31.0±0.1	Volts
$I_{SBY}$	Max standby current, AC off	1.5	ma

### 36V Battery Bank

PARAMETER	DESCRIPTION / CONDITIONS	VALUE	UNITS
$V_{FSTERM}$	Fast charge transition voltage	43.8 ±0.2	VDC
$V_{FLOAT}$	Float voltage, $I_{OUT} < I_{FS}$ , 25°C	13.5 ±0.2	VDC
$I_{max}$	Maximum charging current	xx.x ±0.1 (12 Amp model) xx.x ±0.1 (7 Amp model) xx.x ±0.1 (3 Amp model)	Amps
$I_{ABTERM}$	Absorption transition current	2.0 ±0.1	Amps
$V_{EQ}$	Equalization voltage @ < 1A	46.5 ±0.2	Volts
$I_{SBY}$	Max standby current, AC off	1.8	ma

### 48V Battery Bank

PARAMETER	DESCRIPTION / CONDITIONS	VALUE	UNITS
$V_{FSTERM}$	Fast charge transition voltage	58.4 ±0.2	VDC
$V_{FLOAT}$	Float voltage, $I_{OUT} < I_{FS}$ , 25°C	54.4 ±0.2	VDC
$I_{max}$	Maximum charging current	xx.x ±0.1 (10 Amp model) xx.x ±0.1 (5 Amp model) xx.x ±0.1 (3 Amp model)	Amps
$I_{ABTERM}$	Absorption transition current	1.5 ±0.1	Amps
$V_{EQ}$	Equalization voltage @ < 1A	62.0 ±0.2	Volts
$I_{SBY}$	Max standby current, AC off	1	ma

# 2-Bank Charger

## 2-bank Charger Ordering Guide,p/n Mx2Gbcd-r

P/N Field	Definition	Options	Description																																																																						
x	Enclosure Options	A - High Power Enclosure B - Med Power Enclosure	Describes the enclosure type, see Output and Mounting section for descriptions.  The enclosure is a factor of voltage and current options, see the description of options c, d below.																																																																						
b	Input Power Type and Ranges	For AC input chargers, three options; A, B and V are available  For DC input chargers, 4 options; 08, 09, 10 and 11 are available	<b>AC Input Voltage Range Options:</b> <table border="1" style="margin-left: auto; margin-right: auto;"> <thead> <tr> <th>Option</th> <th>AC Input Voltage Range</th> </tr> </thead> <tbody> <tr> <td>A</td> <td>85 - 140 VAC</td> </tr> <tr> <td>B</td> <td>180 - 300 VAC</td> </tr> <tr> <td>C</td> <td>85 - 300 VAC</td> </tr> </tbody> </table> <b>DC Input Voltage Range Options:</b> <table border="1" style="margin-left: auto; margin-right: auto;"> <thead> <tr> <th>Option</th> <th>DC Input Voltage Range</th> </tr> </thead> <tbody> <tr> <td>08</td> <td>18 - 36 VDC</td> </tr> <tr> <td>09</td> <td>30 - 50 VDC</td> </tr> <tr> <td>10</td> <td>38 - 75 VDC</td> </tr> <tr> <td>11</td> <td>72 - 140 VDC</td> </tr> </tbody> </table>	Option	AC Input Voltage Range	A	85 - 140 VAC	B	180 - 300 VAC	C	85 - 300 VAC	Option	DC Input Voltage Range	08	18 - 36 VDC	09	30 - 50 VDC	10	38 - 75 VDC	11	72 - 140 VDC																																																				
Option	AC Input Voltage Range																																																																								
A	85 - 140 VAC																																																																								
B	180 - 300 VAC																																																																								
C	85 - 300 VAC																																																																								
Option	DC Input Voltage Range																																																																								
08	18 - 36 VDC																																																																								
09	30 - 50 VDC																																																																								
10	38 - 75 VDC																																																																								
11	72 - 140 VDC																																																																								
c, d	Output Voltage and current options	For each output voltage several output current models are available for each enclosure type, choose voltage (c) and current options (d) for the table the right	<b>Charging Current vs Output Voltage and Enclosure Type</b> <table border="1" style="margin-left: auto; margin-right: auto;"> <thead> <tr> <th colspan="5">Lead Based Chargers</th> </tr> <tr> <th>Output Voltage</th> <th>Voltage Option(c)</th> <th>Output Current</th> <th>Current Option(d)</th> <th>Enclosure</th> </tr> </thead> <tbody> <tr><td>12V</td><td>12</td><td>40 Amps</td><td>40</td><td>MA</td></tr> <tr><td>12V</td><td>12</td><td>20 Amps</td><td>20</td><td>MB</td></tr> <tr><td>12V</td><td>12</td><td>10 Amps</td><td>10</td><td>MB</td></tr> <tr><td>24V</td><td>24</td><td>20 Amps</td><td>20</td><td>MA</td></tr> <tr><td>24V</td><td>24</td><td>10 Amps</td><td>10</td><td>MB</td></tr> <tr><td>24V</td><td>24</td><td>5 Amps</td><td>5</td><td>MB</td></tr> <tr><td>36V</td><td>36</td><td>12 Amps</td><td>12</td><td>MA</td></tr> <tr><td>36V</td><td>36</td><td>7 Amps</td><td>7</td><td>MB</td></tr> <tr><td>36V</td><td>36</td><td>3 Amps</td><td>3</td><td>MB</td></tr> <tr><td>48V</td><td>48</td><td>10 Amps</td><td>10</td><td>MA</td></tr> <tr><td>48V</td><td>48</td><td>5 Amps</td><td>5</td><td>MB</td></tr> <tr><td>48V</td><td>48</td><td>3 Amps</td><td>3</td><td>MB</td></tr> </tbody> </table>	Lead Based Chargers					Output Voltage	Voltage Option(c)	Output Current	Current Option(d)	Enclosure	12V	12	40 Amps	40	MA	12V	12	20 Amps	20	MB	12V	12	10 Amps	10	MB	24V	24	20 Amps	20	MA	24V	24	10 Amps	10	MB	24V	24	5 Amps	5	MB	36V	36	12 Amps	12	MA	36V	36	7 Amps	7	MB	36V	36	3 Amps	3	MB	48V	48	10 Amps	10	MA	48V	48	5 Amps	5	MB	48V	48	3 Amps	3	MB
Lead Based Chargers																																																																									
Output Voltage	Voltage Option(c)	Output Current	Current Option(d)	Enclosure																																																																					
12V	12	40 Amps	40	MA																																																																					
12V	12	20 Amps	20	MB																																																																					
12V	12	10 Amps	10	MB																																																																					
24V	24	20 Amps	20	MA																																																																					
24V	24	10 Amps	10	MB																																																																					
24V	24	5 Amps	5	MB																																																																					
36V	36	12 Amps	12	MA																																																																					
36V	36	7 Amps	7	MB																																																																					
36V	36	3 Amps	3	MB																																																																					
48V	48	10 Amps	10	MA																																																																					
48V	48	5 Amps	5	MB																																																																					
48V	48	3 Amps	3	MB																																																																					
r	Options	List of Available Options, listed separated by '-' characters, some options are mutually exclusive.	An: External Interface, choose n as follows: 0 - RS-232, 1 - RS-485, 2 - Wired Ethernet, 3 - CAN, 5 - Wireless Ethernet, 99 - Special Consult factory for others																																																																						
<p>Example: P/N MB2GC2410-R1 specifies a 2-bank Lead-based charger with an AC input voltage range of 85 - 280 VAC using enclosure B, and has 24V outputs rated at 10 amps each. An optional RS-485 interface is included.</p>																																																																									

# 2-Bank Charger

## Certifications and Compliance (model dependant - consult factory)

a	UL CSA
b	CE mark
c	California Energy Compliant
d	RF emissions: US FCC Part 15 Class A, CISPR 22:2009
e	IEC 555, power factor
f	IEC 61000-4-5; Class 4 Severity Level, Surge
g	IEEE C2-2012 National Electrical Safety Code
h	NFPA 70-2014 National Electric Code
i	IEC 60950 Safety of IT Equipment; Pollution Degree 2
j	WEEE and Restriction of Hazardous Substances (ROHS) Directives 2002/95/EC
k	T-Mark

## Workmanship specifications

IPC-610	Acceptability of electronic assemblies IPC J-STD-006 Requirements for electronic grade solder alloys and fluxed and non-fluxed solid solders for electronic soldering applications
IPC-2221	FR4, 130C 94V-0
IPC/WHMA-A-620	Requirements and acceptance of wiring and cabling

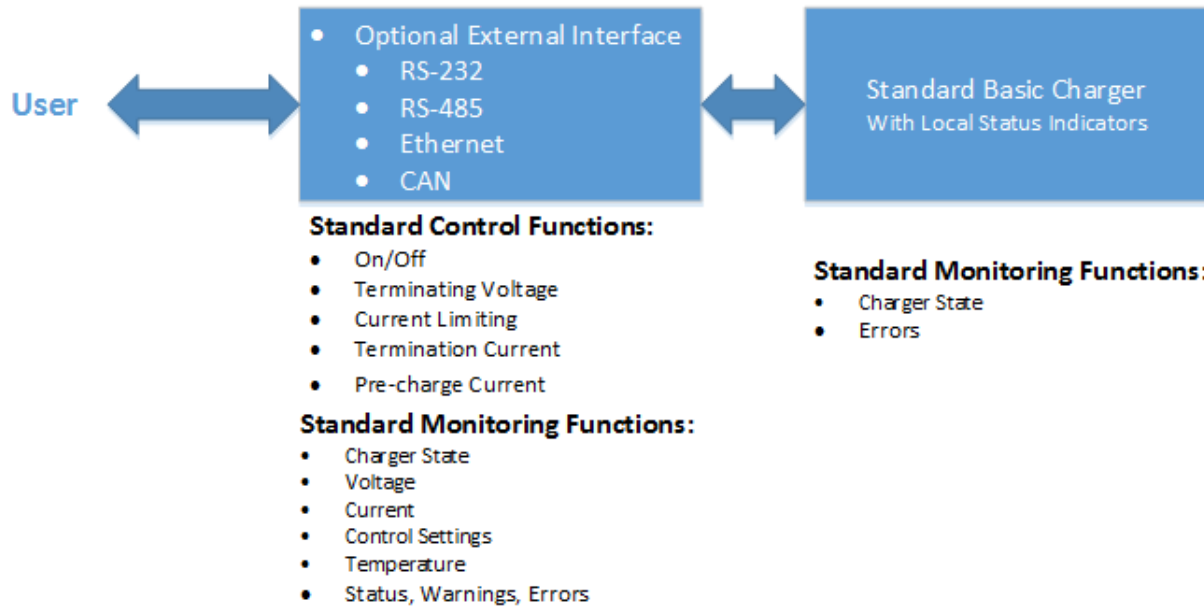
## Mechanical specifications

PARAMETER	(units are in inches and pounds)
Dimensions	Enclosure A/B: 11.0 (L) x 8.5 (W) x 3.34 (H)
Chassis material	Aluminum
Chassis finish	Black anodized
Clearance	15 inches all sides
Mounting	#6 screws at six locations
Battery connection	4 foot cables with ring terminals
Fan connector	Molex P/N 53048-0310
Weight	Twelve pounds
Fan noise at full speed	< 45dBA at 10 feet

## Environmental specifications

PARAMETER	DESCRIPTION / CONDITIONS
Operating environment	Indoor/outdoor - IP67 -not submersible
Storage temp.	-40°C to +80°C
Operating temp.	-20°C to +50°C at maximum output over entire DC voltage range
Humidity	0°C to +95°C relative humidity (non-condensing)
Operational altitude	10,000 feet
Vibration	MIL-STD-810 or IEC60068-2-6 and -2-64 as applicable
Shock	MIL-STD-810 or IEC60068-2-27 as applicable
Isolation	Input - chassis: 2KVDC Input - output: 2KVDC Output - chassis: 500VDC
DC leakage current	Input - chassis: < 200uA at 2KVDC Input - output: < 100uA at 2KVDC
AC leakage current	< 3.5mA at 264VAC, 60Hz

### Control and Monitor Interfaces



## Outline and mounting

